

CUSTOMER TECHNICAL MEMO # 280

Subject Alspec Double Screen Tracks

Date: 1st November 2016

Author: Product Development Team

Alspec are pleased to advise the release of two double screening track systems to cater for various door screens and configurations which is generally used for retro fit applications.

24mm pocket (ST23, ST24, ST25)

This narrow framing system is ideal for a stacking configuration in one direction. It allows for the Alspec 23.5mm screen door top guide (1309906) into the head frame to reduce rattling of panels, keeping it square and rigid.

28mm pocket (ST20, ST21, ST22)

This wider framing system caters for ST9 Receiver Channel to allow for meeting stile panels to be inserted into the head without the need for machining the top giving the door a complete panel finish.

Code	New Description
1411020	ST20 Double Screen Track 28mm Head
1411121	ST21 Double Screen Track 28mm Sill
1411122	ST22 Double Screen Track 28mm Jamb
1411123	ST23 Double Screen Track 24mm Head
1411124	ST24 Double Screen Track 24mm Sill
1411125	ST25 Double Screen Track 24mm Jamb

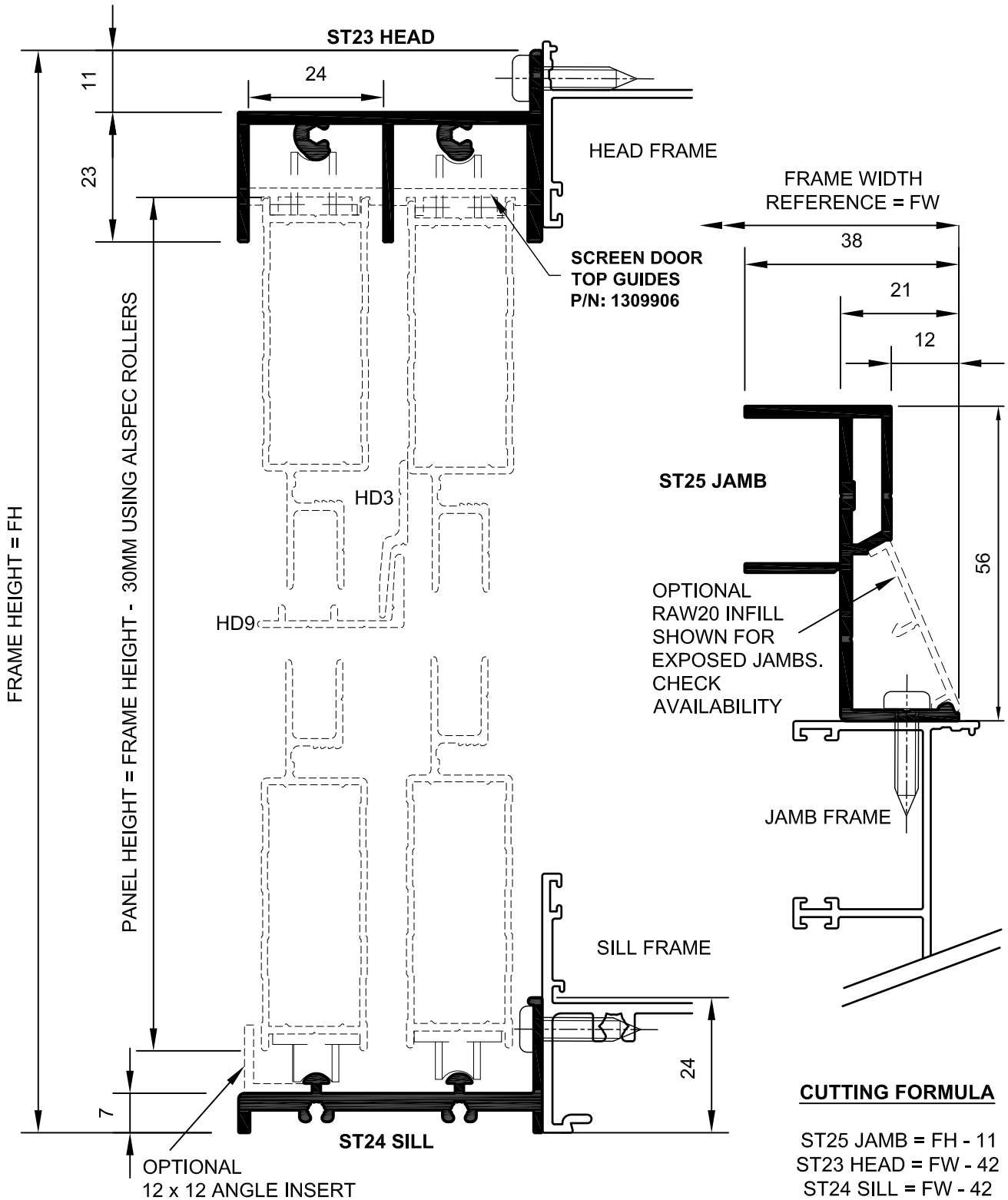
See attached pages for brief technical detail.

If you have any questions please do not hesitate to contact your Area Manager or local Branch.

Regards,

Product Development Team

24mm DOUBLE SCREEN FRAME



CUTTING FORMULA

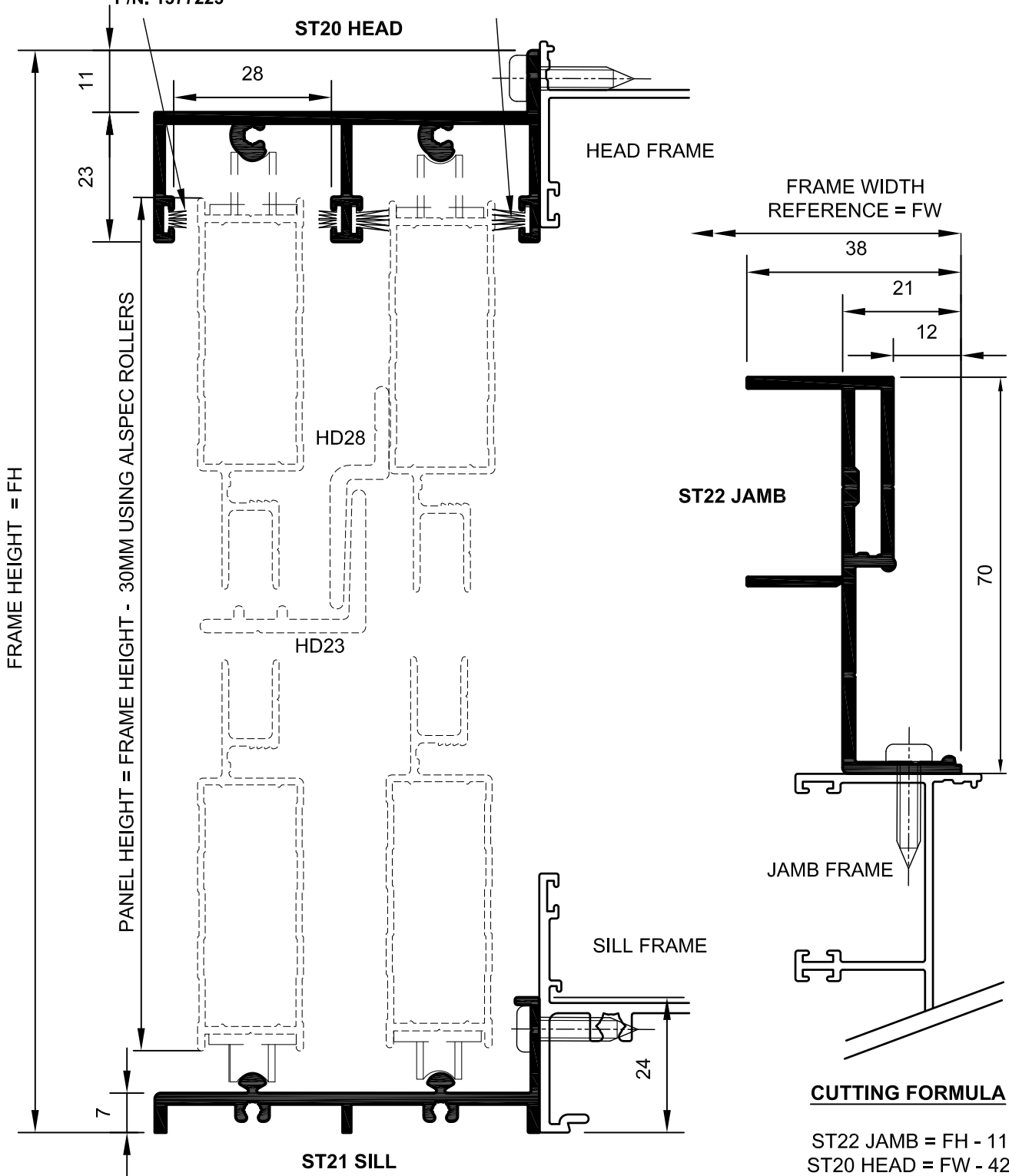
ST25 JAMB = FH - 11
 ST23 HEAD = FW - 42
 ST24 SILL = FW - 42

NOTE: FRAME REQUIRES 6G x 1 INCH STAINLESS STEEL PAN HEAD SCREWS

28mm DOUBLE SCREEN FRAME

USE PB48-400 WEATHER SEAL FOR
MEETING STILE CONFIGURATION
P/N: 1377223

USE PB48-475 WEATHER SEAL FOR
STACKING CONFIGURATION
P/N: 1377241

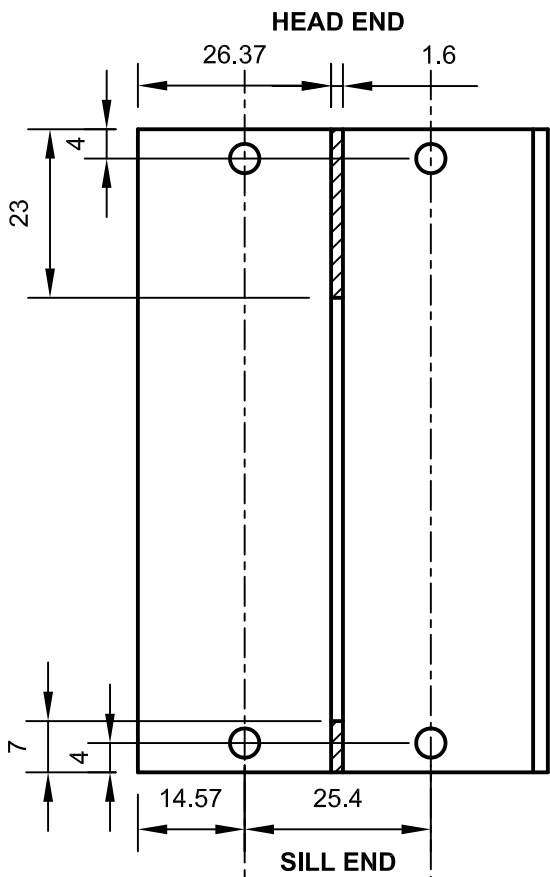


CUTTING FORMULA

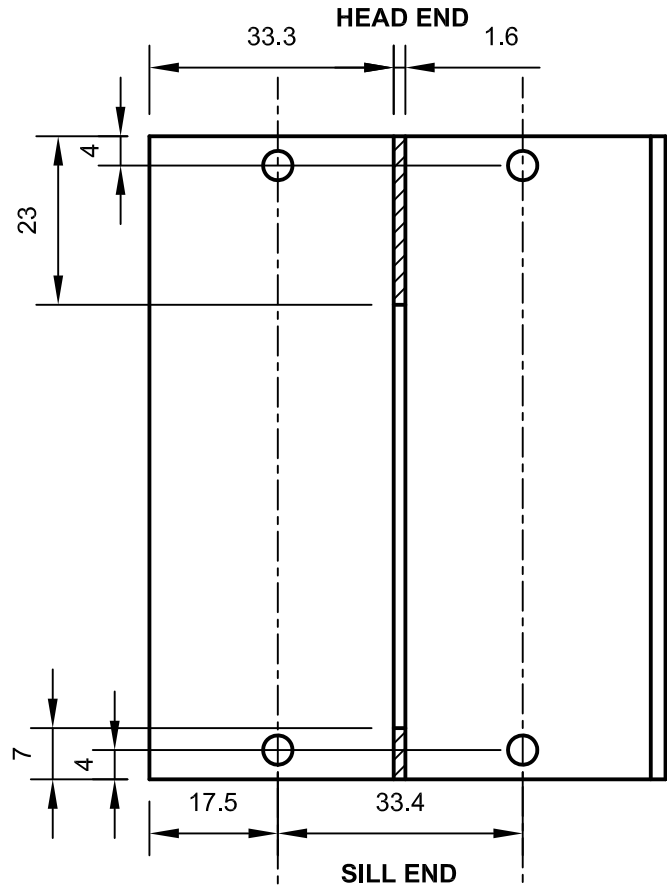
ST22 JAMB = FH - 11
ST20 HEAD = FW - 42
ST21 SILL = FW - 42

NOTE: FRAME REQUIRES 6G x 1 INCH STAINLESS STEEL PAN HEAD SCREWS

DOUBLE SCREEN FRAME MACHINING DETAIL



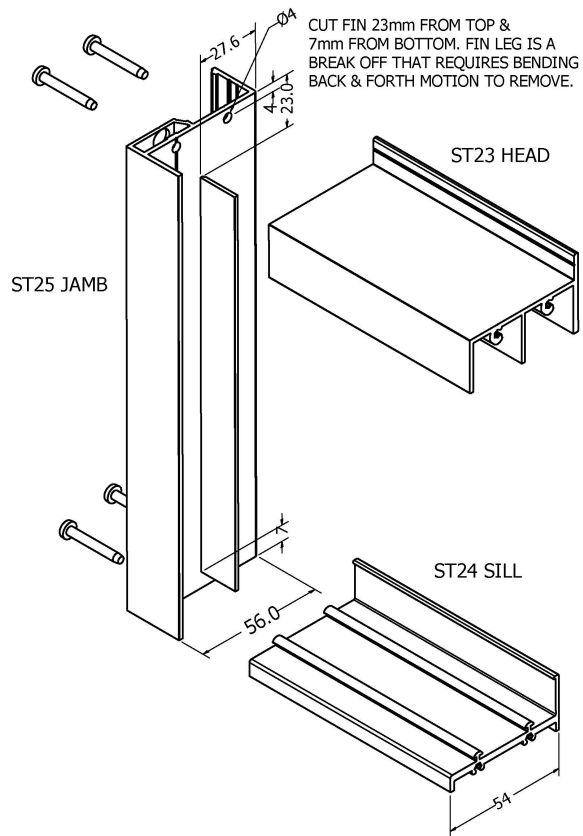
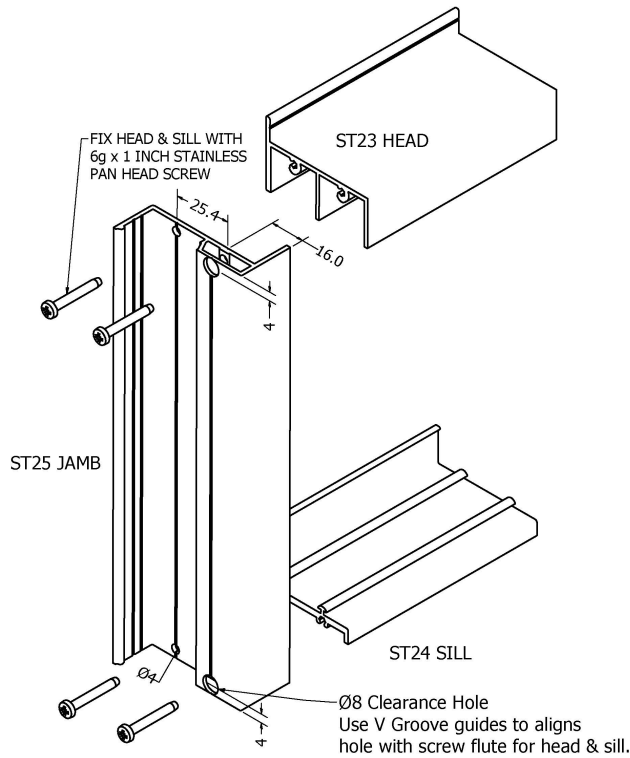
ST25 JAMB



ST22 JAMB

NOTE: ALL SCREW HOLES ARE 4MM DIAMETER OTHERWISE SHOWN.

DOUBLE SCREEN FRAME CORNER ASSEMBLY



NOTE: 24mm FRAME OPTION SHOWN. 28MM FRAME WILL BE THE SAME METHOD WITH VARIED WIDTH SIZES